

Housing and Social Care

The best of both worlds

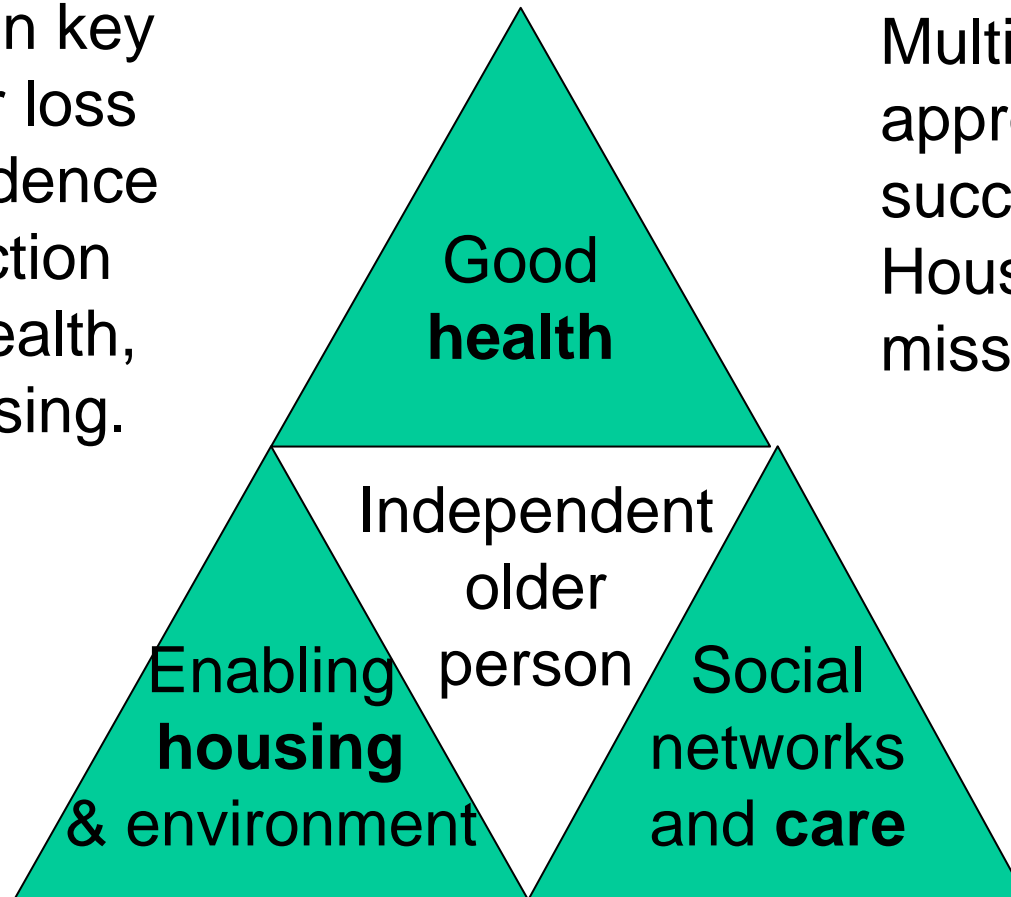
Jane Everton
Head of Housing Care & Support
Communities & Local Government

- What is the aim? – Prevention
- What tools do you have? - Evidence
- How will you deliver this? - Commissioning

Prevention - Health, Housing, Care

‘The triangle of independence’

Evidence on key reasons for loss of independence are inter-action between health, social, housing.



Multi-disciplinary approach more successful.
Housing often missing link.

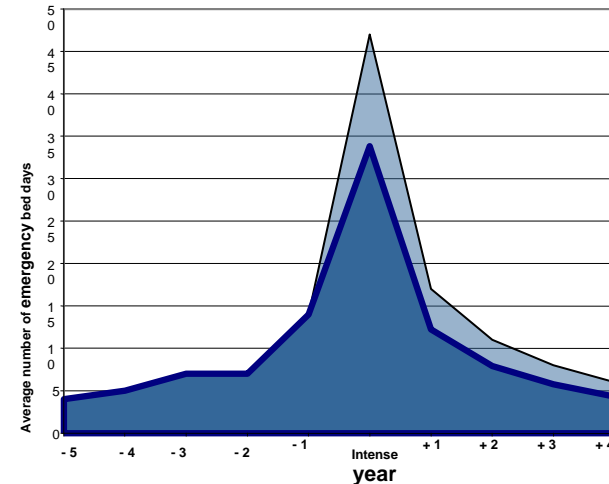
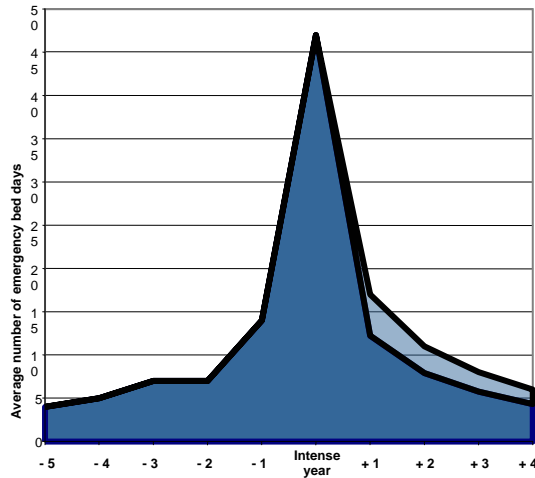
Services in one area fail the person if other parts missing.



- CLG commissioned Capgemini model which to understand the **financial benefits** provided through SP investment.
- Identifies the extent to which it saves money elsewhere through **preventing** or deferring use of more costly alternatives e.g.
 - health interventions (e.g. by reducing falls),
 - committing or becoming a victim of crime, or
 - becoming homeless.
- Investing in packages of support that include housing support avoids costs elsewhere. Specifically, an investment of £1.55bn produced a net financial benefit of **£2.77bn**.
- E.g. the net financial benefits for older people, per 1000 clients per year:

Client group	Cost per 1000 units of support (£m)	Net financial benefits per 1000 units of support (£m)
Older people – sheltered	(0.3)	1.4
Older people – v sheltered	(1.2)	5.1
Older people – floating support	(0.7)	0.5

King's Fund research shows that **early interventions** can be much more effective for older people.





‘Predictive risk modelling’ to accurately identify people a year before a care crisis.

- Uses routinely collected data
- Not affected by the inverse care law
- Based on existing tools e.g ‘PARR’ and Combined Model, which have been successfully trialled with hospital admissions

DH piloting a predictive risk modelling approach that identifies individuals at risk of both health and care crises, a year early.



- **Client Records** – began in 2003. Providers complete forms for every new client, recording standard information such as client characteristics and services accessed. Analysed by **St Andrews University**, on behalf of CLG.
- **Outcomes** – began in 2007. Providers complete forms for every client leaving a service, recording information on how successful housing support services were in achieving outcomes. Analysed by St Andrews on behalf of CLG.
- **SPLS** – submitted to CLG every quarter via AAs. Wide range of data including performance against NI 141 and 142, number and types of services available and spend information.
- This data can be used to support and track progress against a number of priorities around vulnerable people:
 - domestic violence
 - alcohol harm
 - re-offending
 - the satisfaction of people over 65 with their home and neighbourhood.
- **Data available on web-site**

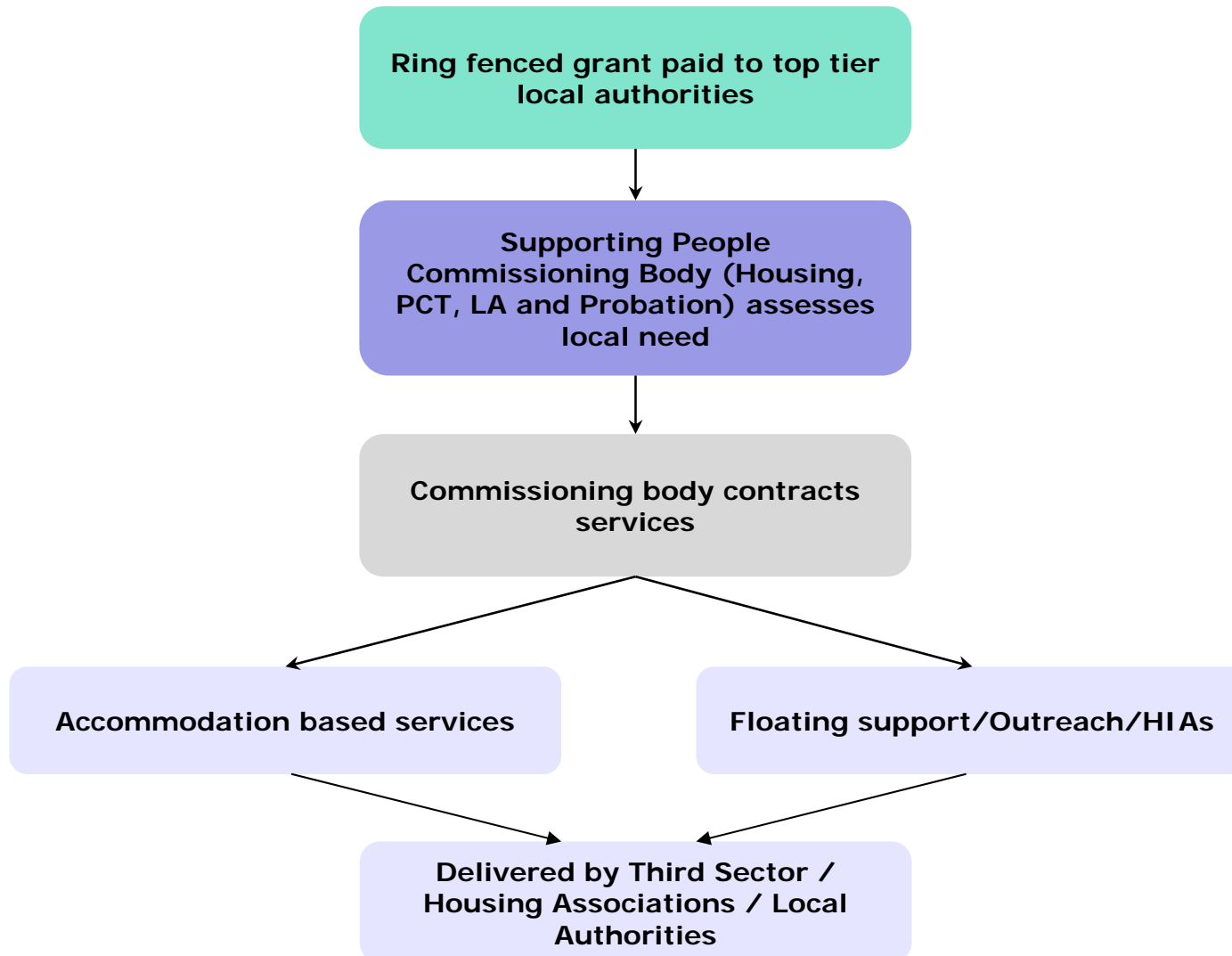
- Mr K is a 29 year old man with alcohol abuse problems. He received a direct access service provided by a charitable organisation from April 2007 to March 2008. This was funded through Administering Authority X.
- Mr K was assessed as requiring support as in the chart below:

	Need Met?	Reason(s) if not achieved
Achieving Economic Wellbeing		
Maximising income	Yes	
Enjoying and Achieving		
Participating in training and education	Yes	
Be Healthy		
Better manage physical health	Yes	
Better manage substance misuse issues	No	Client ceased to receive support service before outcome was achieved.
Staying Safe		
Maintaining accommodation / avoiding eviction	No	Client unable to engage with support.

- Mr K left the service in a planned way to stay with family living in the same area.

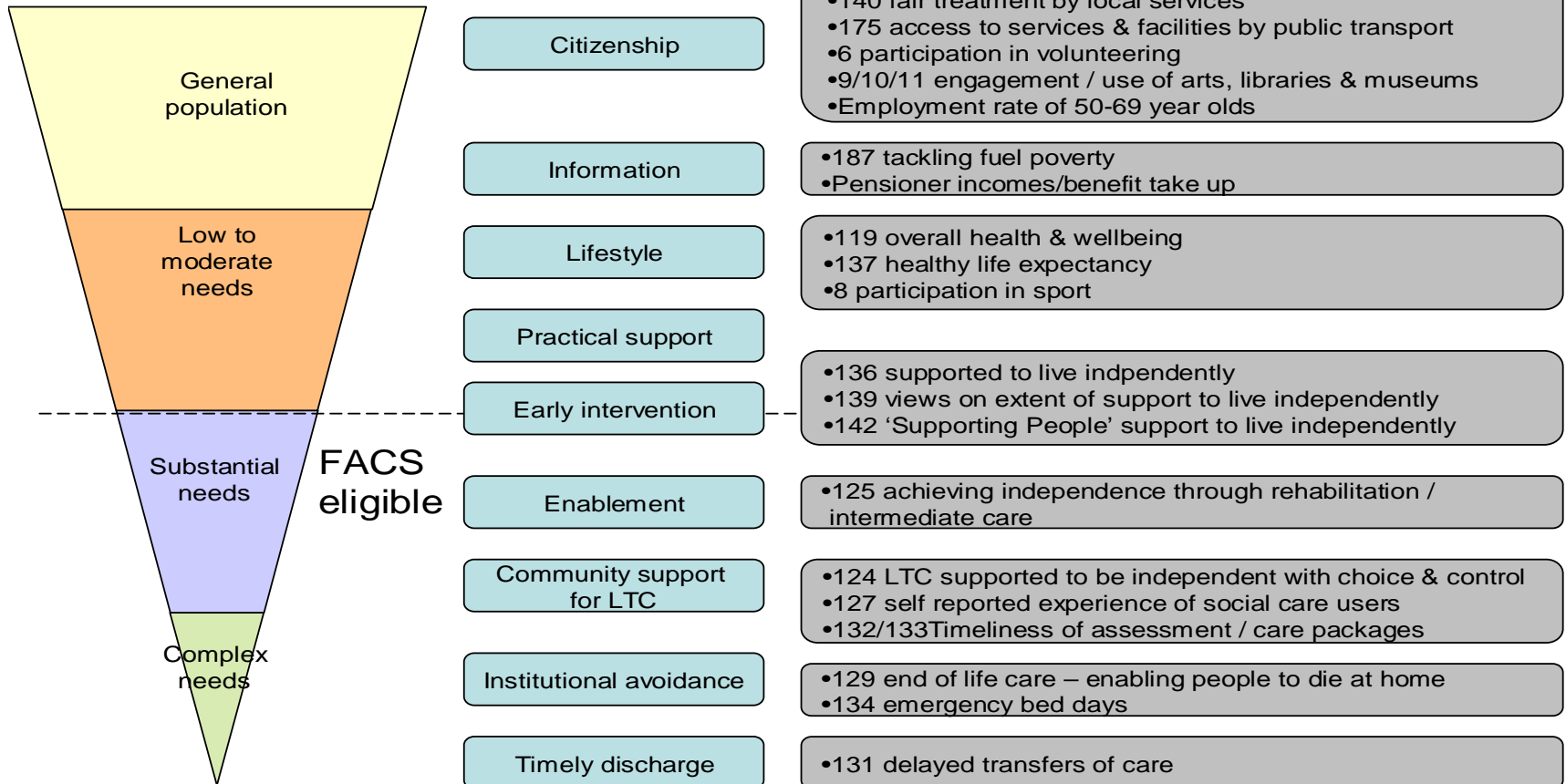
How is Supporting People delivered?

Accommodation based services delivered by Third Sector/Housing Associations/Local authorities



Commissioning – The new framework

'Preventative' interventions



Choice & Control
Dignity:
Carers:

130 social care clients receiving self directed support

128 users treated with dignity and respect

135 carers receiving assessment of needs and specific carers service, advice or information

Commissioning – new landscape

- **Requirement for annual Joint Strategic Needs Assessments from April 2008.**
- **Needs assessment for Supporting People Strategy can provide a template for the JSNA**
- **Will be added to other information to form baseline measurement for LAA targets**
- **Will further integrate LAA & Vital Signs targets through the LSP and measure progress on both over time**
- **Integrated baseline information & targets combine to establish a joint commissioning strategy informed by the principles of World Class Commissioning**
- **Support and measurement of LSP progress on LAA targets will be carried out by the RIEP**



Developing and distributing resource packs on;

- Engagement with RIEPs & the National Improvement Strategy
- Needs Analysis, Commissioning & Procurement-jointly with CSIP
- Tendering for Providers-jointly with SITRA

Regional resource teams

- to provide support in the regions to achieve better outcomes for vulnerable people helping to successfully deliver:
 - PSAs and National Indicators relevant to vulnerable people
 - Smarter procurement and commissioning
- Three regional resource Team will to cover the NORTH, MIDLANDS and SOUTH
- The Teams will work closely with GOs, REIPs and Authorities but will remain accountable to CLG

- The Communities and Local Government website:
www.communities.gov.uk
- Capgemini Research:
<http://www.communities.gov.uk/publications/housing/supportingpeoplefinance>
- Supporting People Strategy:
www.spkweb.org.uk